



# Priming Assisted Centrifugal Pump w/Autostart

## Model PA6A60-4045T S5 Size 6" x 6"



Total Head		Capacity of Pump in U.S. Gallons per Minute (GPM) at Continuous Performance			
P.S.I.	Feet				
59.4	137	320	320	320	320
52.0	120	710	780	780	780
43.4	100	770	1050	1240	1260
34.7	80	800	1085	1360	1560
26.0	60	825	1130	1430	1640
17.3	40	850	1180	1485	1700
Suction Lift		25'	20'	15'	10'

### PUMP SPECIFICATIONS

**Size:** 6" x 6" (152 mm x 152 mm) Flanged.

**Casing:** Gray Iron 30.

**Maximum Operating Pressure** 99 psi (683 kPa).\*

**Semi-Open Type, Two Vane Impeller:** Ductile Iron 65-45-12.

Handles 3" (76,2 mm) Diameter Spherical Solids.

**Impeller Shaft:** Stainless Steel 17-4 PH.

**Shaft Sleeve:** Stainless Steel 17-4 PH.

**Replaceable Wear Plate:** Steel 1015.

**Intermediate Bracket:** Gray Iron 30.

**Seal Plate:** Gray Iron 30.

**Seal:** Mechanical, Oil-Lubricated, Double Floating Self-Aligning. Silicon Carbide Rotating and Stationary Faces. Stainless Steel 316 Stationary Seat. Fluorocarbon Elastomers (DuPont Viton® or Equivalent). Stainless Steel 18-8 Cage and Spring. Maximum Temperature of Liquid Pumped 160°F (71°C).\*

**Priming Chamber:** Gray Iron 30 Housing w/Stainless Steel Float and Linage.

**Discharge Check Valve:** Ductile Iron w/Buna-N Flapper.

**Radial Bearing:** Open Single Row Ball.

**Thrust Bearing:** Open Double Row Ball.

**Bearing and Seal Cavity Lubrication:** SAE 30 Non-Detergent Oil.

**Flanges:** Gray Iron 30.

**Gaskets:** Resistant Synthetic Rubber, Cork, PTFE, Vegetable Fiber, and Compressed Synthetic Fibers.

**Hardware:** Standard Plated Steel.

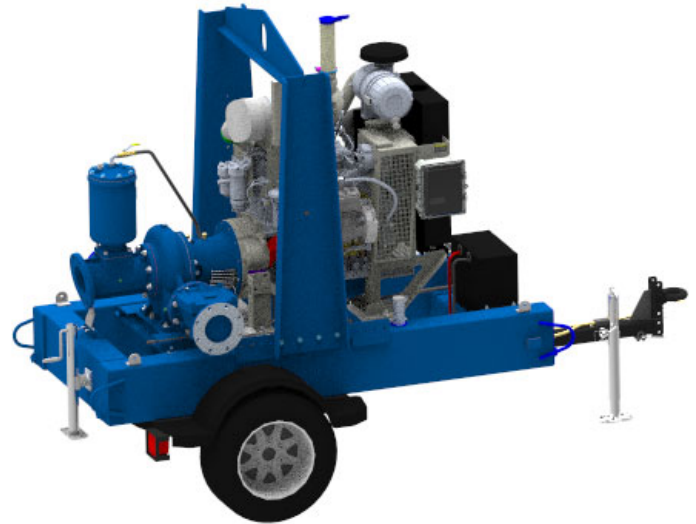
**Bearing and Seal Cavity Oil Level Sight Gauges.**

\*Consult Factory for Applications Exceeding Maximum Pressure and/or Temperature Indicated.

**Standard Equipment:** Hoisting Bail. Skid Base. Strainer. Gear-Driven Air Compressor. [Full Feature Control Panel](#) [Single Ball Type Float Switch](#).\*\*

**Optional Equipment:** Battery. Skid Drag Base Kit Heated Priming Chamber Kit. Suction and Discharge NPT Threaded Flange Kits. High Speed (55 MPH/89 KM/H) Single Axle Pneumatic-Tired Wheel Kit<sup>w/wo</sup> DOT-Approved Lights and Electric Brakes. [Tandem Axle Over-the-Road Trailer](#) (Meets DOT Requirements) Available w/Either Electric or Hydraulic Surge Brakes, Running Lights, Jack Stands and Safety Cables. Submersible Transducer Liquid Level Sensor.

\*\*50 Ft. (15 m) Standard Length; Dual Switches and Alternate Cable Lengths Available From the Factory.



SHOWN WITH OPTIONAL WHEEL KIT



### ENGINE SPECIFICATIONS

**Model:** John Deere 4045T.

**EPA Tier:** Stage 5.

**Type:** Four Cylinder, Four Cycle, Turbocharged, Liquid Cooled Diesel Engine.

**Displacement:** 276 Cu. In. (4,5 liters).

**Lubrication:** Forced Circulation.

**Air Cleaner:** Dry Type.

**Fuel Tank:** 70 U.S. Gals. (265 liters).

**Full Load Operating Time:** 23 Hrs.

**Starter:** 12V Electric.

**Standard Features:** Muffler w/Guard and Weather Cap, DOC/DPF Exhaust After-Treatment System.

**Engine Control Features:** Padlockable Box with Throttle Control, Tachometer, Coolant Temperature, Oil Pressure, Voltage and Overstart Indicators/Shut-downs. Manual/Stop/Auto Keyswitch. Audible Startup Warning Delay. Fuel Level Display/Alarm/Shutdown Electronic Fuel Level Sensor.

**JOHN DEERE PUBLISHED PERFORMANCE:**  
Maximum Net Continuous BHP  
74 (55 kW) @ 2400 RPM



## GORMAN-RUPP PUMPS

www.grpumps.com

Specifications Subject to Change Without Notice

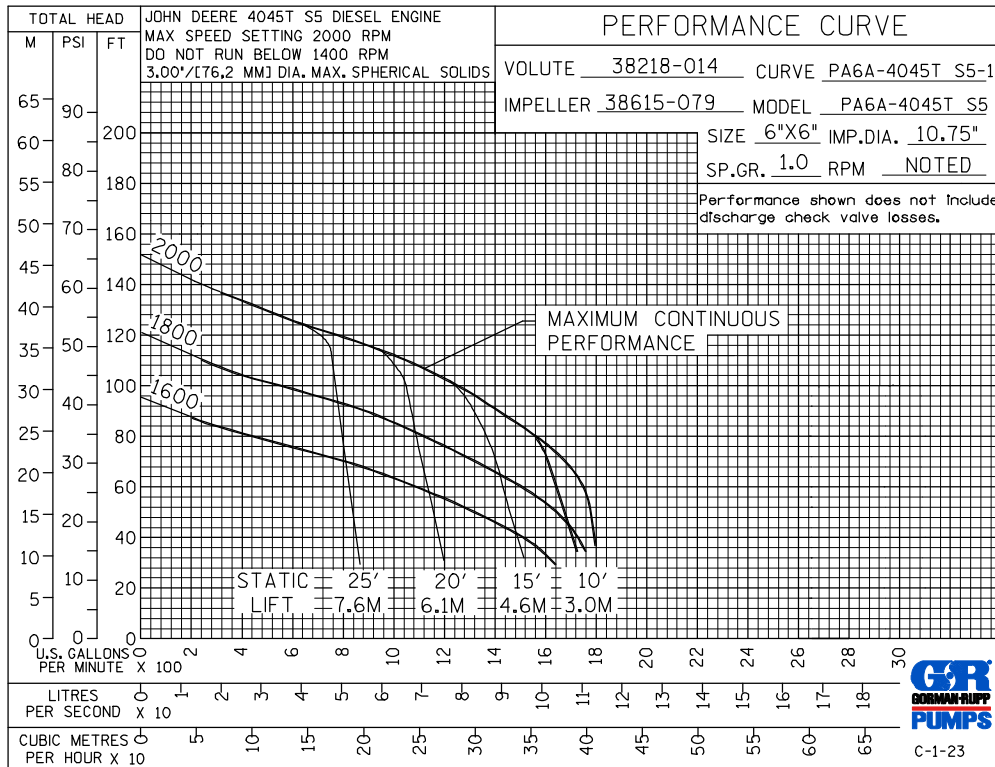
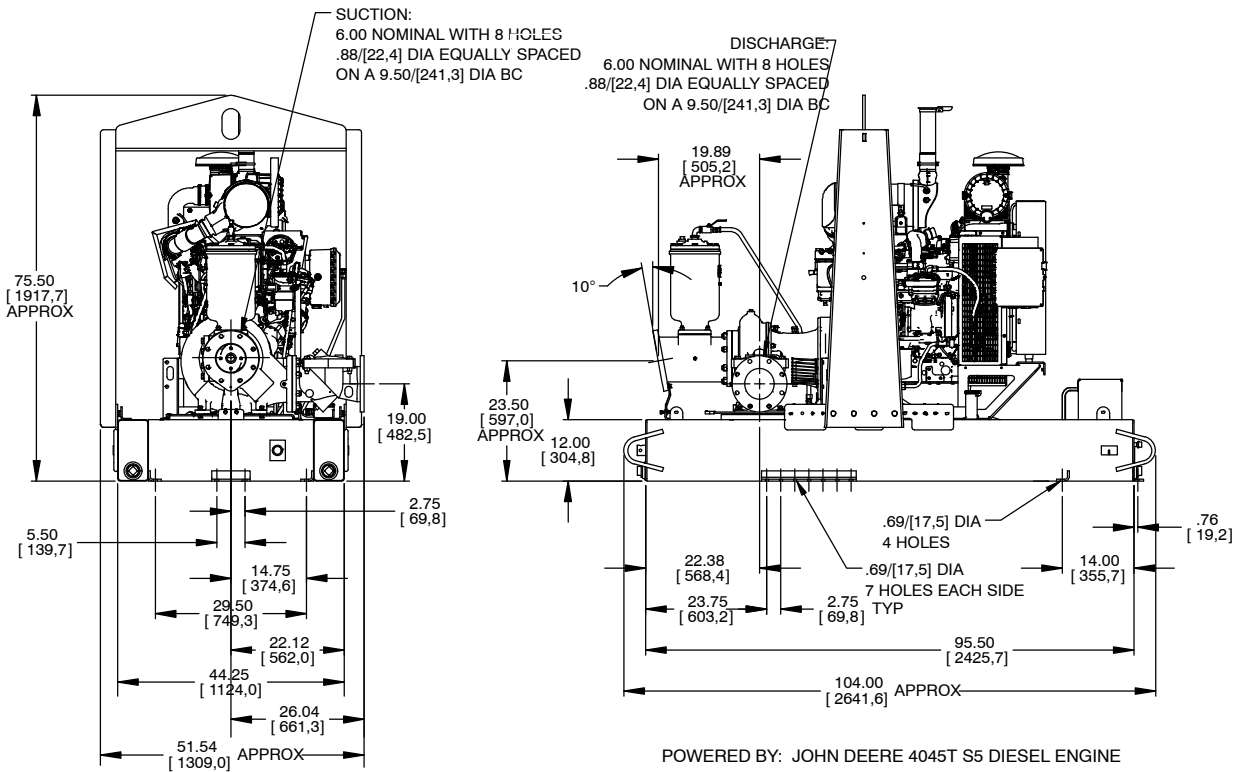
Printed in U.S.A.

**Specification Data**

**SECTION 42, PAGE 906**

APPROXIMATE  
DIMENSIONS and WEIGHTS

**NET WEIGHT: 3495 LBS. (1585 KG.)**  
**SHIPPING WEIGHT: 3750 LBS. (1701 KG.)**  
**EXPORT CRATE SIZE: 278 CU. FT. (7,9 CU. M.)**



**GORMAN-RUPP PUMPS**

www.grpumps.com

Specifications Subject to Change Without Notice

Printed in U.S.A.