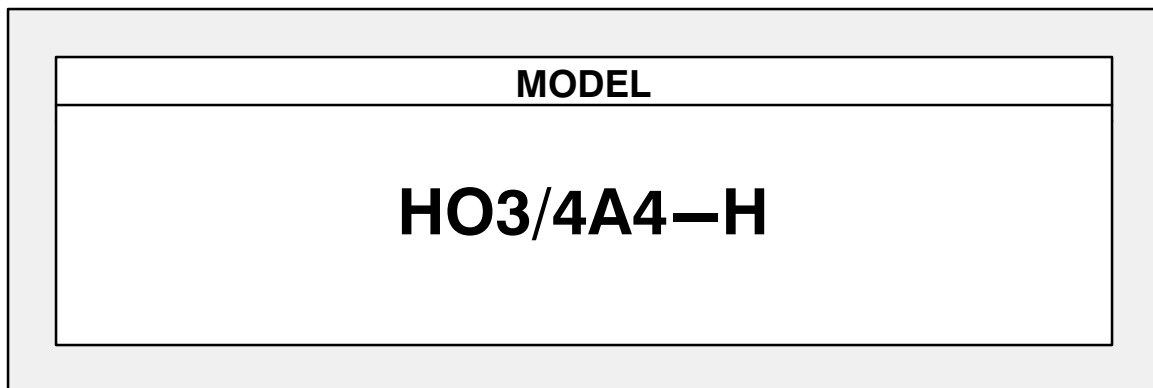


# PARTS LIST AND MAINTENANCE MANUAL

## HO SERIES PUMP



### TABLE OF CONTENTS

<b>PUMP MAINTENANCE AND REPAIR .....</b>	<b>PAGE E – 1</b>
PARTS LIST:	
Pump Model HO3/4A4-H .....	PAGE E – 1
PUMP AND SEAL DISASSEMBLY AND REASSEMBLY .....	PAGE E – 2

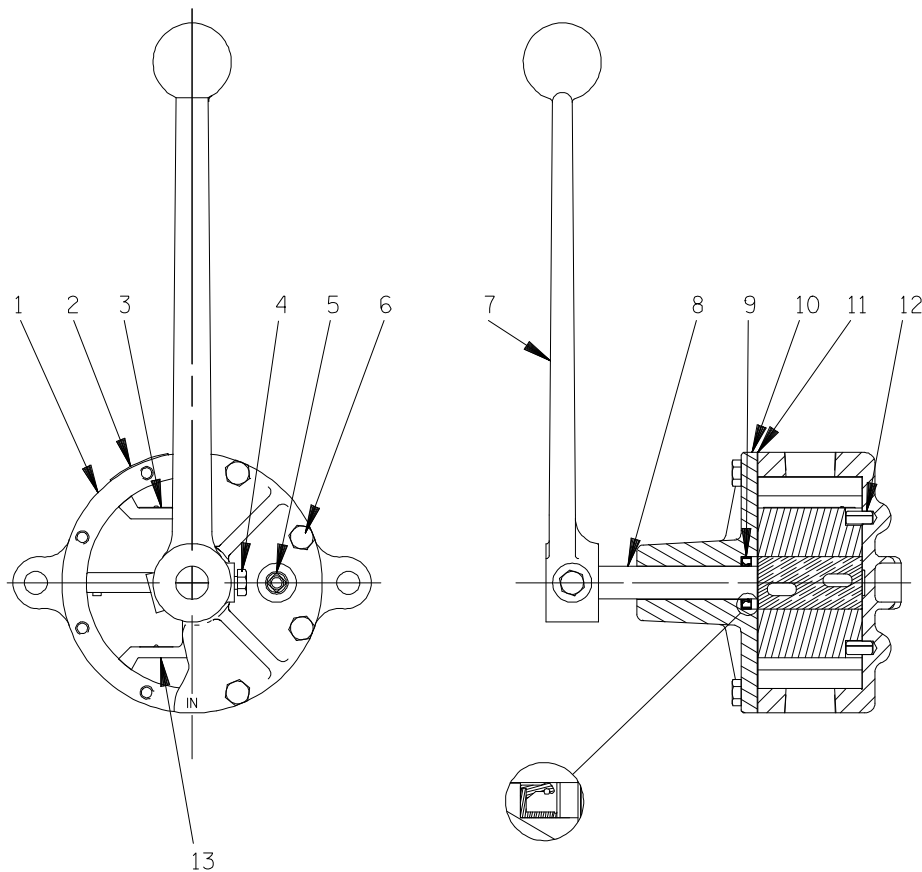
**THE GORMAN-RUPP COMPANY • MANSFIELD, OHIO**

GORMAN-RUPP OF CANADA LIMITED • ST. THOMAS, ONTARIO, CANADA   Printed in U.S.A.

©Copyright by the Gorman-Rupp Company

# PUMP MAINTENANCE AND REPAIR - SECTION E

## SECTION DRAWING



**Figure 1. Pump Model HO3/4A4-H**

### PARTS LIST

(From S/N RH009916 up)

If your pump serial number is followed by an "N", your pump is **NOT** a standard production model. Contact the Gorman-Rupp Company to verify part numbers.

ITEM NO.	PART NAME	PART NUMBER	MAT'L CODE	QTY	ITEM NO.	PART NAME	PART NUMBER	MAT'L CODE	QTY
1	PUMP HOUSING	38233-091	10010	1	10	LID	38242-706	10000	1
2	NAMEPLATE DECAL	38812-065	----	1	11	* HOUSING GASKET SET	48211-055	----	1
3	DISCHARGE DECK ASSY	46442-507	----	1	12	ROLL PIN	21154-786	----	2
4	HEX HD CAPSCREW	21632-914	----	1	13	SUCTION DECK ASSY	46442-007	----	1
5	PIPE PLUG	P02	15079	1	OPTIONS:				
6	HEX HD CAPSCREW	B0403	15991	8		H.O. HANDLE KIT	48152-005	----	1
7	LEVER	38582-020	10000	1		ACCESSORY MOUNTING			
8	WING AND SHAFT ASSY	38552-501	14000	1		KIT	48228-003	----	1
9	* OIL SEAL	25258-071	----	1					

\* INDICATES PARTS RECOMMENDED FOR STOCK

## PUMP AND SEAL DISASSEMBLY AND REASSEMBLY

Review all warnings in the **INSTALLATION AND OPERATION** manual.

Follow the instructions on all tags, label and decals attached to the pump.

This pump requires little service due to its rugged, minimum-maintenance design. However, if it becomes necessary to inspect or replace the wearing parts, follow these instructions which are keyed to the sectional view (see Figure 1) and the accompanying parts list.

### Pump Disassembly

Before attempting to service the pump, close all valves in the system and remove the suction and discharge piping. Remove the hardware securing the pump to its mounting surface, and move the pump to a clean, well-equipped shop for service.

Loosen the capscrew (4) and remove the lever (7). Remove the capscrews (6), and pull the lid (10), wing and shaft assembly (8), and oil seal (9) out of the housing as a single unit. Remove the housing gasket set (11) and clean the mating surfaces.

### NOTE

*Note the location of the words "IN" and "OUT" on the lid compared to the suction and discharge ports. This is **very important** for reassembly. The fill plug (5) should be located in the 3 o'clock position.*

Slide the wing and shaft assembly out of the lid. Use a screwdriver or other suitable tool to pry the oil seal out of the lid.

Lift the suction deck assembly (13) and discharge deck assembly (3) out of the housing (1). Inspect the two locating pins (12) for damage. If replacement is required, pull them from the housing.

### Pump Reassembly

Clean all component parts with a cloth soaked in fresh cleaning solvent. Use an approved solvent when cleaning parts; **never** use gasoline.



**Most cleaning solvents are toxic and flammable. Use them only in a well ventilated area free from excessive heat, sparks, and flame. Read and follow all precautions printed on solvent containers.**

Inspect the parts for wear or damage and replace as required. If the shaft or wing are damaged, the complete assembly must be replaced. Individual parts are not sold separately. The same is true of the suction and discharge deck assemblies; valves are not sold separately.

If removed, press new locating pins (12) into the housing.

Install the suction deck assembly (13) in the housing so that the valves are directed **toward** the center of the pump.

Install the discharge deck assembly (3) in the housing so that the valves are directed **away** from the center of the pump.

Lightly lubricate the oil seal (9), and use an arbor (or hydraulic) press and a suitable sized dowel to install it in the lid (10) with the lip positioned as shown in Figure 1.

Carefully slide the wing and shaft assembly (8) into the lid. **Be careful** not to roll the lip of the oil seal.

Position the housing gasket set (11) against the lid, and slide the assembled lid, seal, and wing and shaft assembly into the housing.

### NOTE

*The raised bosses on the wing should be directed toward the suction deck assembly to provide proper mounting.*

Secure the lid to the housing with the capscrews (6). **Be sure** the words "IN" and "OUT" cast into the lid are directed toward the correct ports. The fill plug should be located in the 3 o'clock position. Secure the lever (7) to the shaft with the capscrew (4).

Check the shaft endplay. If endplay is excessive, remove the lid and discard one of the housing gaskets.

**For U.S. and International Warranty Information,  
Please Visit [www.grpumps.com/warranty](http://www.grpumps.com/warranty)  
or call:  
U.S.: 419-755-1280  
International: +1-419-755-1352**

**For Canadian Warranty Information,  
Please Visit [www.grcanada.com/warranty](http://www.grcanada.com/warranty)  
or call:  
519-631-2870**